

Our Ref AMP/14862CO/25/HJC

ASHBURNHAM HOUSE
1 MAITLAND ROAD
LION BARN ESTATE
NEEDHAM MARKET
SUFFOLK
IP6 8NZ

Telephone (01449) 723 723
Fax (01449) 723 907
www.rsa-geotechnics.co.uk



8 March 2019

London Borough of Hackney
Hackney Service Centre
1 Hillman Street
Hackney
London
E8 1DY

For the attention of Mr Steven Pye, Pollution Control Officer

By Email only –
steven.pye@hackney.gov.uk

Dear Steven

**STONE STUDIOS, 80 TO 84 & 88 WALLIS ROAD, HACKNEY WICK E9 5LN
- RADIELLO CARTRIDGE AIR MONITORING FOR VOC & SVOC**

This letter reports the findings of the twenty-fifth round of ongoing air monitoring around the boundary of the above site by RSA Geotechnics Limited, at the request of Telford Homes PLC. The monitoring covers the period between 21 February and 1 March 2019.

1. Introduction

Earlier investigation of the site identified the potential for significant odour/vapour release during development. CFA piling works brought to surface hydrocarbon contaminated soils, as identified within the earlier site investigation. Some odours were reported, and odour/vapour issues were more pronounced during the bulk excavation phase for basement construction for Block A in September 2018.

Recent works at the site included the removal of the stockpile of arisings within the eastern area of the site, as well as a few loads of soils from the Block A excavation on a trial basis; works during the monitoring period covered by this report include the removal of a total of 93 lorry loads of soil between 21 February and 1 March inclusive.

Air monitoring will be maintained for the duration of the groundworks by RSA Geotechnics Limited to assess concentrations of volatile organic compounds at the perimeter of the site during the bulk excavation works and enable the assessment of potential risks to off-site receptors. Radiello 130 passive diffusive sampling tubes have been installed at five locations around the perimeter of the site, to enable measurement of time weighted average concentrations of BTEX, VOC and SVOC, with a sixth monitoring point installed off-site, on the boundary of Mossbourne Academy School. Two further BTEX, VOC and SVOC tubes were installed at

residential receptor locations to the west and north of the site, on 14 February 2019. Testing for speciated total petroleum hydrocarbons (TPH) is also undertaken, for two locations on the site boundary (Locations T1 and T2) and one location at the school (Location T3). Monitoring locations are as illustrated on drawing number 14862CO/2 Version B.

Key volatile constituents of the contamination at the site were considered to be benzene and naphthalene, and these compounds have been adopted as markers for the initial assessment of contamination.

Initial assessment was undertaken adopting the EH40 Workplace Exposure Limit (WEL) for 8 hour time-weighted average (TWA) exposure for benzene of 1 ppm (3.25 mg/m³). There is no UK WEL screening value for naphthalene, however, the US Occupational Safety and Health Administration (OSHA) sets a Permissible Exposure limit (PEL) of 10 ppm (50 mg/m³) for naphthalene in workplace air (8 hour TWA). The National Institute for Occupational Safety and Health (NIOSH) 'immediately dangerous to life or health' (IDLH) screening value for naphthalene in air is 250 ppm.

A detailed air quality assessment was subsequently undertaken by Peak Environmental Solutions, to determine human health risk based vapour monitoring criteria for adjacent land users, taking into account adjacent and distal commercial, school and residential receptors, for the main earthworks proposed to be undertaken over a period of nominally 10 weeks. The assessment report was submitted to LLDC, Hackney Council and PHE for review, and a revised version of the report was submitted on 17 January 2019 to LLDC responding to queries raised on the initial review of the report. The screening values determined and presented in the report have not changed and are summarised in Tables 10 and 11:

Table 10 – Passive Threshold-Uc Criteria in mg/m³				
Substance	Passive Threshold-Uc in mg/m³			
	Adjacent	Distal		
	Commercial & Passer-by	Commercial	School	Residential
Naphthalene	0.16	0.16	0.06	0.08
Sum TPH	25	25	18	10
Aliphatic TPH C5-C6	Via Sum TPH	Via Sum TPH	Via Sum TPH	Via Sum TPH
Aliphatic TPH C6-8				
Aliphatic TPH C8-10				
Aliphatic TPH C10-12				
Aliphatic TPH C12-16				
Aromatic TPH C5-7 (threshold Benzene)				
Aromatic TPH C7-8 (Toluene)	7.4	7.4	1.8	1.3
Aromatic TPH C8-C10				
Aromatic TPH C10-12				
Aromatic TPH C12-16	0.3	0.3	0.2	0.14
Sum Methylnaphthalenes				
Benzene	0.19	0.19	0.13	0.09
Toluene	Pragmatic 10	Pragmatic 10	4	3
Ethylbenzene				
Sum Xylenes				
Sum TMB	0.14	0.14	0.04	0.03
Notes: These thresholds take into account parameter CF-est where relevant (correction factor for time-weighted average concentrations).				

Table 11 – Active Threshold-Uc Criteria in mg/m³				
Substance	Active Threshold-Uc in mg/m³			
	Adjacent	Distal		
	Commercial & Passer-by	Commercial	School	Residential
Naphthalene	0.55	0.55	0.19	0.08
Sum TPH	100	100	60	10
Aliphatic TPH C5-C6	Via Sum TPH	Via Sum TPH	Via Sum TPH	Via Sum TPH
Aliphatic TPH C6-8				
Aliphatic TPH C8-10				
Aliphatic TPH C10-12				
Aliphatic TPH C12-16				
Aromatic TPH C5-7 (threshold Benzene)				
Aromatic TPH C7-8 (Toluene)				
Aromatic TPH C8-C10	35	35	6	1.3
Aromatic TPH C10-12				
Aromatic TPH C12-16				
Sum Methylnaphthalenes	1.5	1.5	0.7	0.14
Benzene	0.9	0.9	0.44	0.09
Toluene	Pragmatic 10	Pragmatic 10	Pragmatic 5	3
Ethylbenzene				
Sum Xylenes				
Sum TMB	0.45	0.45	0.13	0.03

The values in Table 10 are used in the assessment of results from the time-weighted average passive sorbent tube monitoring, while the values in Table 11 are relevant to comparison with active ‘real-time’ sampling using sorbent tubes or other methods.

2. Fieldwork

The twenty-fifth round of monitoring discussed in this report was undertaken over an eight-day period between 21 February and 1 March 2019.

3. Laboratory Analysis

Cross reference between the laboratory test references and the sample locations is given in Table 3.

Table 3 – Laboratory reference and sample location summary	
Location	Laboratory sample reference
V1	I282I
V2	I284I
V3	I286I
V4	I287I
V5	I228I
V6	I289I
V7	I281I
V8	I280I
T1	I283I
T2	I285I
T3	I290I

The laboratory analysis included suites of both VOCs and SVOCs. The results were calculated as time-weighted average concentrations.

Concentrations of VOCs including benzene, were below the detection limit for the test method, of 1 µg/m³ (equivalent to 0.0003 ppm for benzene).

Concentrations of SVOCs were generally below the detection limit for the test method of 1 µg/m³ (equivalent to 0.0002 ppm for naphthalene), however three measurable concentrations of naphthalene were recorded, as follows:

Location	Naphthalene concentration (µg/m³)	Passive Threshold-Uc criteria (µg/m³)			Exceeds?
		<i>Commercial/ passer by</i>	<i>School</i>	<i>Residential</i>	
V4	21	160	60	80	No
V5	31				No
V8	37				No

The highest concentration of 37 µg/m³ was recorded at location V8 to the north of the site. This was higher than concentrations at the site boundary. The prevailing wind for the period was generally not in this direction, and it is considered that the recorded concentration was affected by other factors. Inspection of this location has recorded the presence of parked lorries adjacent to this location on a number of occasions, sometimes with engines running. All recorded concentrations were in any case below the threshold values for the adjacent and distal receptors.

It should be noted that the methods of test for VOC and SVOC are significantly different; VOC analysis is undertaken using headspace analysis while the SVOC analysis using a solvent to desorb determinands from the sampling tube prior to analysis. Consequently there may be some variation in concentrations of determinands measured depending on the method of analysis.

Testing for speciated total petroleum hydrocarbons (TPH) at the two locations on the site boundary and one location at the school (Locations T1, T2 and T3) recorded all concentrations to be below the detection limit for the test method of 100 µg/m³.

4. Conclusions

Concentrations of VOC, SVOC and BTEX were well below the screening values adopted for assessment, as described in this letter report.

Monitoring will continue for the duration of the earthworks on site and will be reported nominally on a weekly basis.

Should you require any further information or assistance, please do not hesitate to contact us.

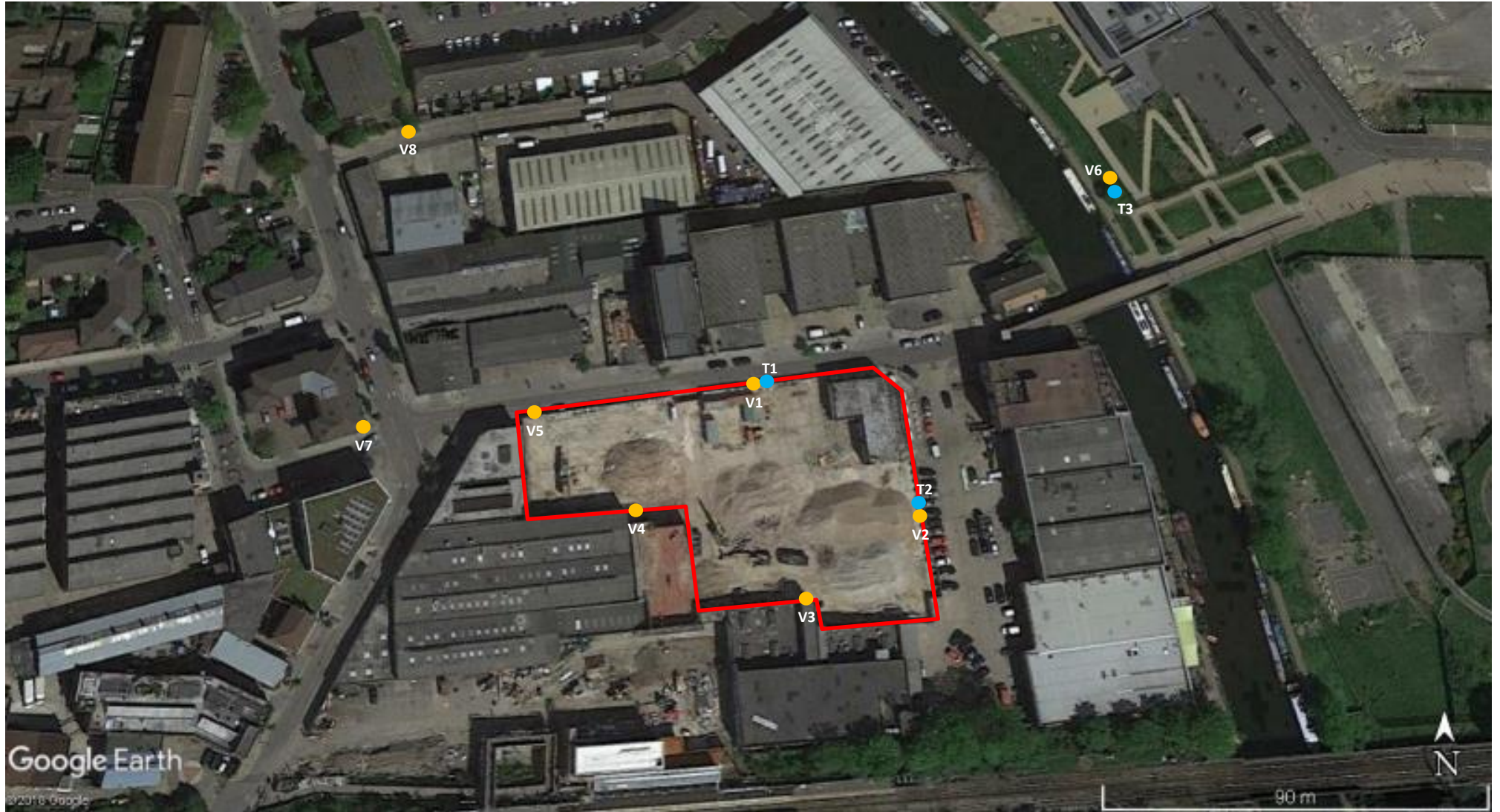
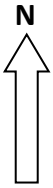
Yours sincerely
RSA Geotechnics Ltd



Adrian Phillips, FGS
Technical Director

Encs Passive Air Monitoring - Drawing Number 14862CO/2 Version B
Laboratory Test Reports (ELAB, 19-22057 & 57058)

Copy (Email) to: Jason Lumb (Arup) jason.lumb@arup.com
Jeff Widd (Arup) jeff.widd@arup.com
Russell Butchers (LLDC) russellbutchers@londonlegacy.co.uk
LLDC lldc@arup.com
Stephen Pedro (Telford Homes) stephen.pedro@telfordhomes.london
Fintan Mooney (Telford Homes) fintan.mooney@telfordhomes.london
Robert Tyler (L B Hackney) Robert.tyler@hackney.gov.uk



NOTE: All locations are approximate

<p>PASSIVE AIR MONITORING (Based upon Google earth image)</p> <p>80 - 84 AND 88 WALLIS ROAD, HACKNEY WICK, E9 5LN</p>	<p>Date 8 MARCH 2019</p>
	<p>Scale NOT TO SCALE</p>
<p>RSA GEOTECHNICS LIMITED</p>	<p>Drawing No 14862CO/2 Version B</p>



Unit A2
Windmill Road
Ponswood Industrial Estate
St Leonards on Sea
East Sussex
TN38 9BY
Telephone: (01424) 718618

cs@elab-uk.co.uk
info@elab-uk.co.uk

THE ENVIRONMENTAL LABORATORY LTD

Analytical Report Number: 19-22057

Issue: 1

Date of Issue: 07/03/2019

Contact: Adrian Phillips

Customer Details: RSA Geotechnics Ltd
Ashburnham House
1 Maitland Road
Needham Market
Suffolk
IP6 8NZ

Quotation No: Q18-01116

Order No: 14862CO

Customer Reference: 14862CO

Date Received: 04/03/2019

Date Approved: 07/03/2019

Details: Wallis Road Air Monitoring 21 Feb to 1 March 2019

Approved by:

Mike Varley, Technical Manager

Any comments, opinions or interpretations expressed herein are outside the scope of UKAS accreditation (Accreditation Number 2683)



Sample Summary

Report No.: 19-22057

Elab No.	Client's Ref.	Date Sampled	Date Scheduled	Description	Deviations
167043	I282I RT V1	01/03/2019	04/03/2019		
167044	I284I RT V2	01/03/2019	04/03/2019		
167045	I286I RT V3	01/03/2019	04/03/2019		
167046	I287I RT V4	01/03/2019	04/03/2019		
167047	I228I RT V5	01/03/2019	04/03/2019		
167048	I289I RT V6	01/03/2019	04/03/2019		
167049	I281I RT V7	01/03/2019	04/03/2019		
167050	I280I RT V8	01/03/2019	04/03/2019		



Results Summary

Report No.: 19-22057

				ELAB Reference	167043	167044	167045	167046	167047	167048	167049	167050
				Customer Reference	RT V1	RT V2	RT V3	RT V4	RT V5	RT V6	RT V7	RT V8
				Sample ID								
				Sample Type	GAS	GAS	GAS	GAS	GAS	GAS	GAS	GAS
				Sample Location	I282I	I284I	I286I	I287I	I228I	I289I	I281I	I280I
				Sample Depth (m)								
				Sampling Date	01/03/2019	01/03/2019	01/03/2019	01/03/2019	01/03/2019	01/03/2019	01/03/2019	01/03/2019
Determinand	Codes	Units	LOD									
VOC												
MTBE	N	µg/m3	1	< 1	< 1	< 1	< 1	< 1	< 1	< 1	< 1	< 1
Heptane	N	µg/m3	1	< 1	< 1	< 1	< 1	< 1	< 1	< 1	< 1	< 1
Octane	N	µg/m3	1	< 1	< 1	< 1	< 1	< 1	< 1	< 1	< 1	< 1
Nonane	N	µg/m3	1	< 1	< 1	< 1	< 1	< 1	< 1	< 1	< 1	< 1
Benzene	N	µg/m3	1	< 1	< 1	< 1	< 1	< 1	< 1	< 1	< 1	< 1
Toluene	N	µg/m3	1	< 1	< 1	< 1	< 1	< 1	< 1	< 1	< 1	< 1
Ethylbenzene	N	µg/m3	1	< 1	< 1	< 1	< 1	< 1	< 1	< 1	< 1	< 1
m+p-xylene	N	µg/m3	1	< 1	< 1	< 1	< 1	< 1	< 1	< 1	< 1	< 1
o-xylene	N	µg/m3	1	< 1	< 1	< 1	< 1	< 1	< 1	< 1	< 1	< 1
cis-1,2-dichloroethene	N	µg/m3	1	< 1	< 1	< 1	< 1	< 1	< 1	< 1	< 1	< 1
1,1-Dichloroethane	N	µg/m3	1	< 1	< 1	< 1	< 1	< 1	< 1	< 1	< 1	< 1
Chloroform	N	µg/m3	1	< 1	< 1	< 1	< 1	< 1	< 1	< 1	< 1	< 1
Tetrachloromethane	N	µg/m3	1	< 1	< 1	< 1	< 1	< 1	< 1	< 1	< 1	< 1
1,1,1-Trichloroethane	N	µg/m3	1	< 1	< 1	< 1	< 1	< 1	< 1	< 1	< 1	< 1
Trichloroethylene	N	µg/m3	1	< 1	< 1	< 1	< 1	< 1	< 1	< 1	< 1	< 1
Tetrachloroethylene	N	µg/m3	1	< 1	< 1	< 1	< 1	< 1	< 1	< 1	< 1	< 1
1,1,1,2-Tetrachloroethane	N	µg/m3	1	< 1	< 1	< 1	< 1	< 1	< 1	< 1	< 1	< 1
1,1,2,2-Tetrachloroethane	N	µg/m3	1	< 1	< 1	< 1	< 1	< 1	< 1	< 1	< 1	< 1
Chlorobenzene	N	µg/m3	1	< 1	< 1	< 1	< 1	< 1	< 1	< 1	< 1	< 1
Bromobenzene	N	µg/m3	1	< 1	< 1	< 1	< 1	< 1	< 1	< 1	< 1	< 1
Bromodichloromethane	N	µg/m3	1	< 1	< 1	< 1	< 1	< 1	< 1	< 1	< 1	< 1
Methylethylbenzene	N	µg/m3	1	< 1	< 1	< 1	< 1	< 1	< 1	< 1	< 1	< 1
1,1-Dichloro-1-propene	N	µg/m3	1	< 1	< 1	< 1	< 1	< 1	< 1	< 1	< 1	< 1
Trans - 1-2 -dichloroethylene	N	µg/m3	1	< 1	< 1	< 1	< 1	< 1	< 1	< 1	< 1	< 1
2,2-Dichloropropane	N	µg/m3	1	< 1	< 1	< 1	< 1	< 1	< 1	< 1	< 1	< 1
Bromochloromethane	N	µg/m3	1	< 1	< 1	< 1	< 1	< 1	< 1	< 1	< 1	< 1
1,2-Dichloroethane	N	µg/m3	1	< 1	< 1	< 1	< 1	< 1	< 1	< 1	< 1	< 1
Dibromomethane	N	µg/m3	1	< 1	< 1	< 1	< 1	< 1	< 1	< 1	< 1	< 1
1,2-Dichloropropane	N	µg/m3	1	< 1	< 1	< 1	< 1	< 1	< 1	< 1	< 1	< 1
cis-1,3-Dichloro-1-propene	N	µg/m3	1	< 1	< 1	< 1	< 1	< 1	< 1	< 1	< 1	< 1
trans-1,3-Dichloro-1-propene	N	µg/m3	1	< 1	< 1	< 1	< 1	< 1	< 1	< 1	< 1	< 1
1,1,2-Trichloroethane	N	µg/m3	1	< 1	< 1	< 1	< 1	< 1	< 1	< 1	< 1	< 1
Dibromochloromethane	N	µg/m3	1	< 1	< 1	< 1	< 1	< 1	< 1	< 1	< 1	< 1
1,3-Dichloropropane	N	µg/m3	1	< 1	< 1	< 1	< 1	< 1	< 1	< 1	< 1	< 1
Dibromoethane	N	µg/m3	1	< 1	< 1	< 1	< 1	< 1	< 1	< 1	< 1	< 1
Styrene	N	µg/m3	1	< 1	< 1	< 1	< 1	< 1	< 1	< 1	< 1	< 1
Propylbenzene	N	µg/m3	1	< 1	< 1	< 1	< 1	< 1	< 1	< 1	< 1	< 1
2-Chlorotoluene	N	µg/m3	1	< 1	< 1	< 1	< 1	< 1	< 1	< 1	< 1	< 1
1,2,4-Trimethylbenzene	N	µg/m3	1	< 1	< 1	< 1	< 1	< 1	< 1	< 1	< 1	< 1
4-Chlorotoluene	N	µg/m3	1	< 1	< 1	< 1	< 1	< 1	< 1	< 1	< 1	< 1
t-butylbenzene	N	µg/m3	1	< 1	< 1	< 1	< 1	< 1	< 1	< 1	< 1	< 1
1,3,5-Trimethylbenzene	N	µg/m3	1	< 1	< 1	< 1	< 1	< 1	< 1	< 1	< 1	< 1
1-methylpropylbenzene	N	µg/m3	1	< 1	< 1	< 1	< 1	< 1	< 1	< 1	< 1	< 1
p-cymene	N	µg/m3	1	< 1	< 1	< 1	< 1	< 1	< 1	< 1	< 1	< 1
1,3-Dichlorobenzene	N	µg/m3	1	< 1	< 1	< 1	< 1	< 1	< 1	< 1	< 1	< 1
Butylbenzene	N	µg/m3	1	< 1	< 1	< 1	< 1	< 1	< 1	< 1	< 1	< 1
1,2-Dibromo-3-chloropropane	N	µg/m3	1	< 1	< 1	< 1	< 1	< 1	< 1	< 1	< 1	< 1
Hexachlorobutadiene	N	µg/m3	1	< 1	< 1	< 1	< 1	< 1	< 1	< 1	< 1	< 1
1-2-3 - Trichlorobenzene	N	µg/m3	1	< 1	< 1	< 1	< 1	< 1	< 1	< 1	< 1	< 1
Naphthalene	N	µg/m3	1	< 1	< 1	< 1	< 1	< 1	< 1	< 1	< 1	< 1
1-2-4 - Trichlorobenzene	N	µg/m3	1	< 1	< 1	< 1	< 1	< 1	< 1	< 1	< 1	< 1
1,4-Dichlorobenzene	N	µg/m3	1	< 1	< 1	< 1	< 1	< 1	< 1	< 1	< 1	< 1
1,2-Dichlorobenzene	N	µg/m3	1	< 1	< 1	< 1	< 1	< 1	< 1	< 1	< 1	< 1
Bromoform	N	µg/m3	1	< 1	< 1	< 1	< 1	< 1	< 1	< 1	< 1	< 1



Results Summary

Report No.: 19-22057

				ELAB Reference	167043	167044	167045	167046	167047	167048	167049	167050
				Customer Reference	RT V1	RT V2	RT V3	RT V4	RT V5	RT V6	RT V7	RT V8
				Sample ID								
				Sample Type	GAS	GAS	GAS	GAS	GAS	GAS	GAS	GAS
				Sample Location	I282I	I284I	I286I	I287I	I228I	I289I	I281I	I280I
				Sample Depth (m)								
				Sampling Date	01/03/2019	01/03/2019	01/03/2019	01/03/2019	01/03/2019	01/03/2019	01/03/2019	01/03/2019
Determinand	Codes	Units	LOD									
SVOC												
Phenol	N	µg/m3	1	< 1	< 1	< 1	< 1	< 1	< 1	< 1	< 1	< 1
Aniline	N	µg/m3	1	< 1	< 1	< 1	< 1	< 1	< 1	< 1	< 1	< 1
Bis(2-chloroethyl)ether	N	µg/m3	1	< 1	< 1	< 1	< 1	< 1	< 1	< 1	< 1	< 1
2-Chlorophenol	N	µg/m3	1	< 1	< 1	< 1	< 1	< 1	< 1	< 1	< 1	< 1
1,3-Dichlorobenzene	N	µg/m3	1	< 1	< 1	< 1	< 1	< 1	< 1	< 1	< 1	< 1
1,4-Dichlorobenzene	N	µg/m3	1	< 1	< 1	< 1	< 1	< 1	< 1	< 1	< 1	< 1
Benzyl Alcohol	N	µg/m3	1	< 1	< 1	< 1	< 1	< 1	< 1	< 1	< 1	< 1
1,2-Dichlorobenzene	N	µg/m3	1	< 1	< 1	< 1	< 1	< 1	< 1	< 1	< 1	< 1
2-Methylphenol	N	µg/m3	1	< 1	< 1	< 1	< 1	< 1	< 1	< 1	< 1	< 1
Bis(2-chloroisopropyl)ether	N	µg/m3	1	< 1	< 1	< 1	< 1	< 1	< 1	< 1	< 1	< 1
3 and 4-methylphenol	N	µg/m3	1	< 1	< 1	< 1	< 1	< 1	< 1	< 1	< 1	< 1
N-Nitrosodi-n-propylamine	N	µg/m3	1	< 1	< 1	< 1	< 1	< 1	< 1	< 1	< 1	< 1
Hexachloroethane	N	µg/m3	1	< 1	< 1	< 1	< 1	< 1	< 1	< 1	< 1	< 1
Nitrobenzene	N	µg/m3	1	< 1	< 1	< 1	< 1	< 1	< 1	< 1	< 1	< 1
Isophorone	N	µg/m3	1	< 1	< 1	< 1	< 1	< 1	< 1	< 1	< 1	< 1
2-Nitrophenol	N	µg/m3	1	< 1	< 1	< 1	< 1	< 1	< 1	< 1	< 1	< 1
2,4-Dimethylphenol	N	µg/m3	1	< 1	< 1	< 1	< 1	< 1	< 1	< 1	< 1	< 1
Bis(2-chloroethoxy)methane	N	µg/m3	1	< 1	< 1	< 1	< 1	< 1	< 1	< 1	< 1	< 1
2,4-Dichlorophenol	N	µg/m3	1	< 1	< 1	< 1	< 1	< 1	< 1	< 1	< 1	< 1
1,3,5-Trichlorobenzene	N	µg/m3	1	< 1	< 1	< 1	< 1	< 1	< 1	< 1	< 1	< 1
Naphthalene	N	µg/m3	1	< 1	< 1	< 1	21	31	< 1	< 1	< 1	37
3-Chloroaniline	N	µg/m3	1	< 1	< 1	< 1	< 1	< 1	< 1	< 1	< 1	< 1
Hexachloro-1,3-butadiene	N	µg/m3	1	< 1	< 1	< 1	< 1	< 1	< 1	< 1	< 1	< 1
4-Chloro-3-methylphenol	N	µg/m3	1	< 1	< 1	< 1	< 1	< 1	< 1	< 1	< 1	< 1
2-Methylnaphthalene	N	µg/m3	1	< 1	< 1	< 1	< 1	< 1	< 1	< 1	< 1	< 1
1-Methylnaphthalene	N	µg/m3	1	< 1	< 1	< 1	< 1	< 1	< 1	< 1	< 1	< 1
Hexachlorocyclopentadiene	N	µg/m3	1	< 1	< 1	< 1	< 1	< 1	< 1	< 1	< 1	< 1
2,4,6-Trichlorophenol	N	µg/m3	1	< 1	< 1	< 1	< 1	< 1	< 1	< 1	< 1	< 1
2,4,5-Trichlorophenol	N	µg/m3	1	< 1	< 1	< 1	< 1	< 1	< 1	< 1	< 1	< 1
1-Chloronaphthalene	N	µg/m3	1	< 1	< 1	< 1	< 1	< 1	< 1	< 1	< 1	< 1
2-Nitroaniline	N	µg/m3	1	< 1	< 1	< 1	< 1	< 1	< 1	< 1	< 1	< 1
1,4-Dinitrobenzene	N	µg/m3	1	< 1	< 1	< 1	< 1	< 1	< 1	< 1	< 1	< 1
Dimethyl phthalate	N	µg/m3	1	< 1	< 1	< 1	< 1	< 1	< 1	< 1	< 1	< 1
1-3-dinitrobenzene	N	µg/m3	1	< 1	< 1	< 1	< 1	< 1	< 1	< 1	< 1	< 1
2-6-dinitrotoluene	N	µg/m3	1	< 1	< 1	< 1	< 1	< 1	< 1	< 1	< 1	< 1
Acenaphthylene	N	µg/m3	1	< 1	< 1	< 1	< 1	< 1	< 1	< 1	< 1	< 1
1,2-Dinitrobenzene	N	µg/m3	1	< 1	< 1	< 1	< 1	< 1	< 1	< 1	< 1	< 1
3-Nitroaniline	N	µg/m3	1	< 1	< 1	< 1	< 1	< 1	< 1	< 1	< 1	< 1
Acenaphthene	N	µg/m3	1	< 1	< 1	< 1	< 1	< 1	< 1	< 1	< 1	< 1
4-nitrophenol	N	µg/m3	1	< 1	< 1	< 1	< 1	< 1	< 1	< 1	< 1	< 1
Dibenzofuran	N	µg/m3	1	< 1	< 1	< 1	< 1	< 1	< 1	< 1	< 1	< 1
2,3,5,6-Tetrachlorophenol	N	µg/m3	1	< 1	< 1	< 1	< 1	< 1	< 1	< 1	< 1	< 1
2,3,4,6-Tetrachlorophenol	N	µg/m3	1	< 1	< 1	< 1	< 1	< 1	< 1	< 1	< 1	< 1
Diethyl phthalate	N	µg/m3	1	< 1	< 1	< 1	< 1	< 1	< 1	< 1	< 1	< 1
1-chloro-4-phenoxybenzene	N	µg/m3	1	< 1	< 1	< 1	< 1	< 1	< 1	< 1	< 1	< 1
Fluorene	N	µg/m3	1	< 1	< 1	< 1	< 1	< 1	< 1	< 1	< 1	< 1
4-Nitroaniline	N	µg/m3	1	< 1	< 1	< 1	< 1	< 1	< 1	< 1	< 1	< 1
Dinitro-o-cresol	N	µg/m3	1	< 1	< 1	< 1	< 1	< 1	< 1	< 1	< 1	< 1
Diphenylamine	N	µg/m3	1	< 1	< 1	< 1	< 1	< 1	< 1	< 1	< 1	< 1
Azobenzene	N	µg/m3	1	< 1	< 1	< 1	< 1	< 1	< 1	< 1	< 1	< 1
1-bromo-4-phenoxybenzene	N	µg/m3	1	< 1	< 1	< 1	< 1	< 1	< 1	< 1	< 1	< 1
Hexachlorobenzene	N	µg/m3	1	< 1	< 1	< 1	< 1	< 1	< 1	< 1	< 1	< 1
Pentachlorophenol	N	µg/m3	1	< 1	< 1	< 1	< 1	< 1	< 1	< 1	< 1	< 1
Phenanthrene	N	µg/m3	1	< 1	< 1	< 1	< 1	< 1	< 1	< 1	< 1	< 1
Anthracene	N	µg/m3	1	< 1	< 1	< 1	< 1	< 1	< 1	< 1	< 1	< 1
Carbazole	N	µg/m3	1	< 1	< 1	< 1	< 1	< 1	< 1	< 1	< 1	< 1
Dibutyl phthalate	N	µg/m3	1	< 1	< 1	< 1	< 1	< 1	< 1	< 1	< 1	< 1
Fluoranthene	N	µg/m3	1	< 1	< 1	< 1	< 1	< 1	< 1	< 1	< 1	< 1
Pyrene	N	µg/m3	1	< 1	< 1	< 1	< 1	< 1	< 1	< 1	< 1	< 1
Butyl benzyl phthalate	N	µg/m3	1	< 1	< 1	< 1	< 1	< 1	< 1	< 1	< 1	< 1
Bis-2-ethylhexyladipate	N	µg/m3	1	< 1	< 1	< 1	< 1	< 1	< 1	< 1	< 1	< 1
Butyl benzyl phthalate	N	µg/m3	1	< 1	< 1	< 1	< 1	< 1	< 1	< 1	< 1	< 1
Benzo(a)anthracene	N	µg/m3	1	< 1	< 1	< 1	< 1	< 1	< 1	< 1	< 1	< 1
Chrysene	N	µg/m3	1	< 1	< 1	< 1	< 1	< 1	< 1	< 1	< 1	< 1
Bis(2-ethylhexyl)phthalate	N	µg/m3	1	< 1	< 1	< 1	< 1	< 1	< 1	< 1	< 1	< 1
Benzo(b)fluoranthene	N	µg/m3	1	< 1	< 1	< 1	< 1	< 1	< 1	< 1	< 1	< 1
Benzo(k)fluoranthene	N	µg/m3	1	< 1	< 1	< 1	< 1	< 1	< 1	< 1	< 1	< 1
Benzo(a)pyrene	N	µg/m3	1	< 1	< 1	< 1	< 1	< 1	< 1	< 1	< 1	< 1
Indeno(1,2,3-CD)pyrene	N	µg/m3	1	< 1	< 1	< 1	< 1	< 1	< 1	< 1	< 1	< 1
Dibenz(ah)anthracene	N	µg/m3	1	< 1	< 1	< 1	< 1	< 1	< 1	< 1	< 1	< 1
Benzo(ghi)perylene	N	µg/m3	1	< 1	< 1	< 1	< 1	< 1	< 1	< 1	< 1	< 1



Method Summary

Report No.: 19-22057

Parameter	Codes	Analysis Undertaken On	Date Tested	Method Number	Technique
SVOC - Tubes	N		04/03/2019	167	GC-MS
VOC - Tubes	N		04/03/2019	181	GC-MS

Tests marked N are not UKAS accredited

Report Information

Report No.: 19-22057

Key

U	hold UKAS accreditation
M	hold MCERTS and UKAS accreditation
N	do not currently hold UKAS accreditation
^	MCERTS accreditation not applicable for sample matrix
*	UKAS accreditation not applicable for sample matrix
S	Subcontracted to approved laboratory UKAS Accredited for the test
SM	Subcontracted to approved laboratory MCERTS/UKAS Accredited for the test
NS	Subcontracted to approved laboratory. UKAS accreditation is not applicable.
I/S	Insufficient Sample
U/S	Unsuitable sample
n/t	Not tested
<	means "less than"
>	means "greater than"

Soil sample results are expressed on an air dried basis (dried at < 30°C)
ELAB are unable to provide an interpretation or opinion on the content of this report.
The results relate only to the items tested
PCB congener results may include any coeluting PCBs
Uncertainty of measurement for the determinands tested are available upon request
Unless otherwise stated, sample information has been provided by the client

Deviation Codes

- a No date of sampling supplied
- b No time of sampling supplied (Waters Only)
- c Sample not received in appropriate containers
- d Sample not received in cooled condition
- e The container has been incorrectly filled
- f Sample age exceeds stability time (sampling to receipt)
- g Sample age exceeds stability time (sampling to analysis)

Where a sample has a deviation code, the applicable test result may be invalid.

Sample Retention and Disposal

All soil samples will be retained for a period of one month
All water samples will be retained for 7 days following the date of the test report
Charges may apply to extended sample storage



Unit A2
Windmill Road
Ponswood Industrial Estate
St Leonards on Sea
East Sussex
TN38 9BY
Telephone (01424) 718618
Facsimile (01424) 729911

THE ENVIRONMENTAL LABORATORY LTD

F.A.O. Adrian Phillips
RSA Geotechnics Ltd
1 Maitland Road
Needham Market
Suffolk, IP6 8NZ

Reporting Date: 08 March 2019

ANALYTICAL REPORT No. 57058

Samples Received By: Laboratory Courier

Sample Receipt Date: 04/03/19

Your Job No: 14862CO

Your Order No: 14862CO

Site Location: Wallis Road Air Monitoring 21 February to 1 March 2019

No Samples Received: 3

Date of Sampling: 01/03/19

This report was written by: Stuart Ballard

Authorised By;

Mike Varley
Technical Manager (BSc, CChem
CSci, FRSC)

Any comments, opinions or interpretations expressed herein are outside the scope of UKAS accreditation (Accreditation Number 2683)

THE ENVIRONMENTAL LABORATORY LTD

Unit A2, Windmill Road, Ponswood Industrial Estate, St Leonards On Sea, East Sussex, TN38 9BY

Tel: 01424 718618 Fax: 01424 729911

ANALYTICAL REPORT No. 57058

Location: Wallis Road Air Monitoring 21 February to 01 March 2019



Your Job No: 14862CO
Your Order No: 14862CO
Reporting Date: 08/03/19

F.A.O. Adrian Phillips
RSA Geotechnics Ltd
1 Maitland Road
Needham Market
Suffolk, IP6 8NZ

TPH CWG - Tubes

Characteristic	TUBE	TUBE	TUBE
Date Sampled	01/03/19	01/03/19	01/03/19
TP/BH	I283I - RT T1	I285I - RT T2	I290I - RT T3
Our ref	38337	38338	38339
<u>Aromatic</u>			
>EC ₅ -EC ₇	(µg/m ³)	<100	<100
>EC ₇ -EC ₈	(µg/m ³)	<100	<100
>EC ₈ -EC ₁₀	(µg/m ³)	<100	<100
>EC ₁₀ -EC ₁₂	(µg/m ³)	<100	<100
>EC ₁₂ -EC ₁₆	(µg/m ³)	<100	<100
>EC ₁₆ -EC ₂₁	(µg/m ³)	<100	<100
>EC ₂₁ -EC ₃₅	(µg/m ³)	<100	<100
>EC ₃₅ -EC ₄₀	(µg/m ³)	<100	<100
<u>Aliphatic</u>			
>EC ₅ -EC ₆	(µg/m ³)	<100	<100
>EC ₆ -EC ₈	(µg/m ³)	<100	<100
>EC ₈ -EC ₁₀	(µg/m ³)	<100	<100
>EC ₁₀ -EC ₁₂	(µg/m ³)	<100	<100
>EC ₁₂ -EC ₁₆	(µg/m ³)	<100	<100
>EC ₁₆ -EC ₂₁	(µg/m ³)	<100	<100
>EC ₂₁ -EC ₃₅	(µg/m ³)	<100	<100
>EC ₃₅ -EC ₄₀	(µg/m ³)	<100	<100
TPH (C ₅ - C ₄₀)	(µg/m ³)	<100	<100

All results expressed on dry weight basis

** - MCERTS accredited test

Stuart Ballard



Unit A2
Windmill Road
Ponswood Industrial Estate
St Leonards on Sea
East Sussex
TN38 9BY
Telephone (01424) 718618
Facsimile (01424) 729911

THE ENVIRONMENTAL LABORATORY LTD

SAMPLE RECEIPT AND TEST DATES

Our Analytical Report Number 57058
Your Ref No: 14862CO
Sample Receipt Date: 04/03/19
Reporting Date: 08/03/19

Registered: 04/03/19
Prepared: 05/03/19
Analysis complete: 08/03/19

TEST METHOD SUMMARY

PARAMETER	Analysis Undertaken on	Date Tested	Method Number	Technique
Carbon Banding (TPH CWG)	As submitted sample	05/03/19	214	Gas chromatography

Note:- Documented In-house procedure based on HSG 248 2005

** - MCERTS Accredited test

Determinands not marked with * or ** are not accredited

MCERTS accreditation covers samples which are predominantly sand, clay, loam or combinations of these three soil types

Any comments, opinions, or interpretations expressed herein are outside the scope of UKAS accreditation (Accreditation Number 2683)
