

Our Ref AMP/14862CO/44/LMA

ASHBURNHAM HOUSE
1 MAITLAND ROAD
LION BARN ESTATE
NEEDHAM MARKET
SUFFOLK
IP6 8NZ

Telephone (01449) 723 723
Fax (01449) 723 907
www.rsa-geotechnics.co.uk



24 July 2019

London Borough of Hackney
Hackney Service Centre
1 Hillman Street
Hackney
London
E8 1DY

For the attention of Mr Steven Pye, Pollution Control Officer

By Email only –
steven.pye@hackney.gov.uk

Dear Steven

**STONE STUDIOS, 80 TO 84 & 88 WALLIS ROAD, HACKNEY WICK E9 5LN
- RADIELLO CARTRIDGE AIR MONITORING FOR VOC & SVOC**

This letter reports the findings of the forty-fourth round of ongoing air monitoring around the boundary of the above site by RSA Geotechnics Limited, at the request of Telford Homes PLC. The monitoring covers the period between 11 and 19 July 2019.

1. Introduction

Earlier investigation of the site identified the potential for significant odour/vapour release during development. CFA piling works brought to surface hydrocarbon contaminated soils, as identified within the earlier site investigation. Some odours were reported, and odour/vapour issues were more pronounced during the initial bulk excavation phase for basement construction for Block A in September 2018; these works were ceased due to odour issues at that time.

Bulk earthworks recommenced under a new methodology on 7 May 2019. A detailed programme of daily site monitoring will be maintained during these works, including continuous PID monitoring on the site boundary and on Wallis Road, as well as sampling and testing of ambient air to confirm concentrations are acceptable. This is supplemented by passive monitoring at the site boundary and in the surrounding area, as detailed in this report, which is reported on a nominal weekly basis.

Radiello 130 passive diffusive sampling tubes are installed at five locations around the perimeter of the site, at two residential receptor locations to the west and north of the site, and on the boundary of Mossbourne Academy School to the east of the site. This monitoring enables measurement of time-weighted average concentrations of BTEX, VOC and SVOC. Testing for speciated total petroleum hydrocarbons (TPH) is also undertaken, for two locations on the site boundary (Locations T1 and T2) and

one location at the school (Location T3). Monitoring locations are as illustrated on drawing number 14862CO/2 Version B. As above, this passive longer-term monitoring is supplemented by additional monitoring and sampling in 'real-time' during active works on site.

Key volatile constituents of the contamination at the site were considered to be benzene and naphthalene, and these compounds have been adopted as markers for the initial assessment of contamination.

Initial assessment was undertaken adopting the EH40 Workplace Exposure Limit (WEL) for 8 hour time-weighted average (TWA) exposure for benzene of 1 ppm (3.25 mg/m³). There is no UK WEL screening value for naphthalene, however, the US Occupational Safety and Health Administration (OSHA) sets a Permissible Exposure limit (PEL) of 10 ppm (50 mg/m³) for naphthalene in workplace air (8 hour TWA). The National Institute for Occupational Safety and Health (NIOSH) 'immediately dangerous to life or health' (IDLH) screening value for naphthalene in air is 250 ppm.

A detailed air quality assessment was subsequently undertaken by Peak Environmental Solutions, to determine human health risk based vapour monitoring criteria for adjacent land users, taking into account adjacent and distal commercial, school and residential receptors, for the main earthworks proposed to be undertaken over a period of nominally 10 weeks. The assessment report was submitted to LLDC, Hackney Council and PHE for review, and a revised version of the report was submitted on 17 January 2019 to LLDC responding to queries raised on the initial review of the report. The screening values are influenced by the duration of the works; the longer the exposure the lower the thresholds. A Technical Note was issued in April 2019 providing threshold values for works of 10, 15, 20 and 25 weeks. Tables 1a and 1b below summarise threshold values for 10 to 25 week exposure:

Table 1a – Passive Threshold-Uc Criteria in mg/m³				
Substance	Passive Threshold-Uc in mg/m³ 10-25 week exposure			
	Adjacent	Distal		
	Commercial & Passer-by	Commercial	School	Residential
Naphthalene	0.16-0.06	0.16-0.06	0.06-0.02	0.04-0.015
Sum TPH	25-20	25-20	18-7	10-5
Aliphatic TPH C5-C6	Via Sum TPH	Via Sum TPH	Via Sum TPH	Via Sum TPH
Aliphatic TPH C6-8				
Aliphatic TPH C8-10				
Aliphatic TPH C10-12				
Aliphatic TPH C12-16				
Aromatic TPH C5-7 (threshold Benzene)				
Aromatic TPH C7-8 (Toluene)				
Aromatic TPH C8-C10	7.4-4.1	7.4-4.1	1.8-0.8	1.3-0.54
Aromatic TPH C10-12	7.4-4.1	7.4-4.1	1.8-0.8	1.3-0.54
Aromatic TPH C12-16				
Sum Methylnaphthalenes				
Benzene	0.3-0.18	0.3-0.18	0.2-0.08	0.14-0.055
Toluene	Pragmatic 10-4.7	Pragmatic 10-4.7	4-1.9	3-1.3
Ethylbenzene				
Sum Xylenes				
Sum TMB	0.14-0.08	0.14-0.08	0.04-0.02	0.03-0.01

Notes: These thresholds take into account parameter CF-est where relevant (correction factor for time-weighted average concentrations).

Table 1b – Active Threshold-Uc Criteria in mg/m³				
Substance	Active Threshold-Uc in mg/m³ 10-25 week exposure			
	Adjacent	Distal		
	Commercial & Passer-by	Commercial	School	Residential
Naphthalene	0.55-0.22	0.55-0.22	0.19-0.08	0.04-0.015
Sum TPH	100-74	100-74	60-25	10-5
Aliphatic TPH C5-C6	Via Sum TPH	Via Sum TPH	Via Sum TPH	Via Sum TPH
Aliphatic TPH C6-8				
Aliphatic TPH C8-10				
Aliphatic TPH C10-12				
Aliphatic TPH C12-16				
Aromatic TPH C5-7 (threshold Benzene)				
Aromatic TPH C7-8 (Toluene)				
Aromatic TPH C8-C10	35-14	35-14	6-2.7	1.3-0.54
Aromatic TPH C10-12				
Aromatic TPH C12-16				
Sum Methyl-naphthalenes	1.5-0.61	1.5-0.61	0.7-0.28	0.14-0.055
Benzene	0.9-0.37	0.9-0.37	0.44-0.18	0.09-0.035
Toluene	Pragmatic 10	Pragmatic 10	Pragmatic 5	3-1.3
Ethylbenzene				
Sum Xylenes				
Sum TMB	0.45-0.27	0.45-0.27	0.13-0.053	0.03-0.01

The values in Table 1a are used in the assessment of results from the time-weighted average passive sorbent tube monitoring, while the values in Table 1b are relevant to comparison with active 'real-time' sampling using vacuum canisters, pumped sorbent tubes or other methods.

2. Fieldwork

The forty-fourth round of monitoring discussed in this report was undertaken over a eight-day period between 11 and 19 July 2019.

3. Laboratory Analysis

Cross reference between the laboratory test references and the sample locations is given in Table 3.

Table 3 – Laboratory reference and sample location summary

Location	Laboratory sample reference
V1	S874E
V2	S872E
V3	S879E
V4	S878E
V5	S875E
V6	S877E
V7	S873E
V8	S869E
T1	S876E
T2	S871E
T3	S880E

The laboratory analysis included suites of both VOCs and SVOCs. The results were calculated as time-weighted average concentrations.

Concentrations of VOCs including benzene, were below the detection limit for the test method, of $1 \mu\text{g}/\text{m}^3$ (equivalent to 0.0003 ppm for benzene).

Concentrations of SVOCs were generally below the detection limit for the test method of $1 \mu\text{g}/\text{m}^3$. A single measurable concentration of naphthalene was recorded at location V3, of $74 \mu\text{g}/\text{m}^3$ or 0.074 mg/kg, on the southern boundary of the site. Measurable 1-methylnaphthalene and 2-methylnaphthalene at $3 \mu\text{g}/\text{m}^3$ and $4 \mu\text{g}/\text{m}^3$ (0.003 and 0.004 mg/m³) respectively were also recorded at this location. The concentrations of methylnaphthalenes were well below the threshold value. The concentration for naphthalene slightly exceeded the threshold of $60 \mu\text{g}/\text{m}^3$ for 25-week exposure, however the thresholds are for average concentrations and this minor exceedance is not considered to be significant. The average concentration for naphthalene recorded at this location since commencement of the bulk earthworks in May is $9.3 \mu\text{g}/\text{m}^3$. Additionally, the sampling location is within the confines of the site and consequently is likely to significantly over-estimate the exposure to off-site receptors.

Threshold values are influenced by the duration of the exposure; thresholds will be lower for an extended earthworks period. Re-assessment will be undertaken as the works progress to ensure the thresholds remain protective.

It should be noted that the methods of test for VOC and SVOC are significantly different; VOC analysis is undertaken using headspace analysis while the SVOC analysis uses a solvent to desorb determinands from the sampling tube prior to analysis. Consequently there may be some variation in concentrations of determinands measured depending on the method of analysis.

Testing for speciated total petroleum hydrocarbons (TPH) at the two locations on the site boundary and one location at the school (Locations T1, T2 and T3) recorded all concentrations to be below the detection limit for the test method of $100 \mu\text{g}/\text{m}^3$.

4. Conclusions

Concentrations of VOC, SVOC and BTEX were generally well below the screening values adopted for assessment, as described in this letter report. A slight exceedance for naphthalene at location V3 was not considered significant.

Monitoring will continue for the duration of the earthworks on site and will be reported nominally on a weekly basis.

Should you require any further information or assistance, please do not hesitate to contact us.

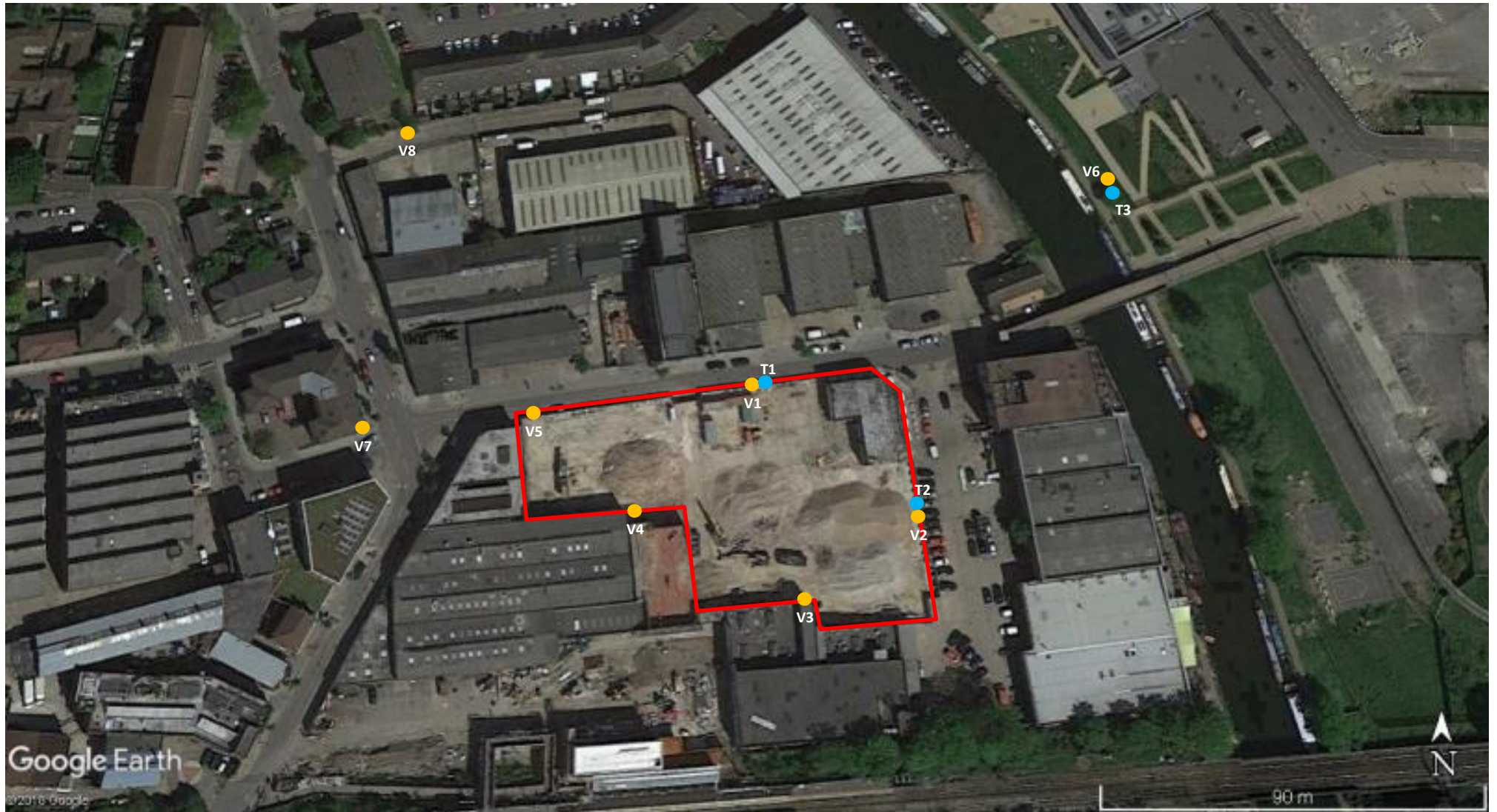
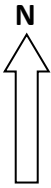
Yours sincerely
 RSA Geotechnics Ltd



Adrian Phillips, FGS
Technical Director

Encs Passive Air Monitoring - Drawing Number 14862CO/2 Version B
 Laboratory Test Reports (ELAB, 19-24066 & 57091)

Copy (Email) to: Jason Lumb (Arup) jason.lumb@arup.com
 Jeff Widd (Arup) jeff.widd@arup.com
 Russell Butchers (LLDC) russellbutchers@londonlegacy.co.uk
 LLDC lldc@arup.com
 Stephen Pedro (Telford Homes) stephen.pedro@telfordhomes.london
 Fintan Mooney (Telford Homes) fintan.mooney@telfordhomes.london
 wallisroad@fourcommunications.com



Google Earth

©2018 Google

90 m

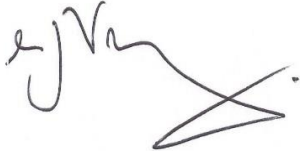
<p>PASSIVE AIR MONITORING (Based upon Google earth image) 80 - 84 AND 88 WALLIS ROAD, HACKNEY WICK, E9 5LN</p>	<p>NOTE: All locations are approximate Date 8 MARCH 2019</p>
	<p>Scale NOT TO SCALE</p>
<p>RSA GEOTECHNICS LIMITED</p>	<p>Drawing No 14862CO/2 Version B</p>



Unit A2
Windmill Road
Ponswood Industrial Estate
St Leonards on Sea
East Sussex
TN38 9BY
Telephone: (01424) 718618

cs@elab-uk.co.uk
info@elab-uk.co.uk

THE ENVIRONMENTAL LABORATORY LTD

Analytical Report Number: 19-24066
Issue: 1
Date of Issue: 23/07/2019
Contact: Adrian Phillips
Customer Details: RSA Geotechnics Ltd
Ashburnham House
1 Maitland Road
Needham Market
Suffolk IP6 8NZ
Quotation No: Q18-01116
Order No: 14862CO
Customer Reference: 14862CO
Date Received: 22/07/2019
Date Approved: 23/07/2019
Details: Wallis Road Air Monitoring 11 to 19 July 2019
Approved by: 

Mike Varley, Technical Manager

Any comments, opinions or interpretations expressed herein are outside the scope of UKAS accreditation (Accreditation Number 2683)



Sample Summary

Report No.: 19-24066, issue number 1

Elab No.	Client's Ref.	Date Sampled	Date Scheduled	Description	Deviations
179350	S874E RTV1	19/07/2019	22/07/2019		
179351	S872E RTV2	19/07/2019	22/07/2019		
179352	S879E RTV3	19/07/2019	22/07/2019		
179353	S878E RTV4	19/07/2019	22/07/2019		
179354	S875E RTV5	19/07/2019	22/07/2019		
179355	S877E RTV6	19/07/2019	22/07/2019		
179356	S873E RTV7	19/07/2019	22/07/2019		
179357	S869E RTV8	19/07/2019	22/07/2019		



Results Summary

Report No.: 19-24066, issue number 1

				ELAB Reference	179350	179351	179352	179353	179354	179355	179356	179357
				Customer Reference	RTV1	RTV2	RTV3	RTV4	RTV5	RTV6	RTV7	RTV8
				Sample ID								
				Sample Type	GAS	GAS	GAS	GAS	GAS	GAS	GAS	GAS
				Sample Location	S874E	S872E	S879E	S878E	S875E	S877E	S873E	S869E
				Sample Depth (m)								
				Sampling Date	19/07/2019	19/07/2019	19/07/2019	19/07/2019	19/07/2019	19/07/2019	19/07/2019	19/07/2019
Determinand	Codes	Units	LOD									
VOC												
MTBE	N	µg/m3	1	< 1	< 1	< 1	< 1	< 1	< 1	< 1	< 1	< 1
Heptane	N	µg/m3	1	< 1	< 1	< 1	< 1	< 1	< 1	< 1	< 1	< 1
Octane	N	µg/m3	1	< 1	< 1	< 1	< 1	< 1	< 1	< 1	< 1	< 1
Nonane	N	µg/m3	1	< 1	< 1	< 1	< 1	< 1	< 1	< 1	< 1	< 1
Benzene	N	µg/m3	1	< 1	< 1	< 1	< 1	< 1	< 1	< 1	< 1	< 1
Toluene	N	µg/m3	1	< 1	< 1	< 1	< 1	< 1	< 1	< 1	< 1	< 1
Ethylbenzene	N	µg/m3	1	< 1	< 1	< 1	< 1	< 1	< 1	< 1	< 1	< 1
m+p-xylene	N	µg/m3	1	< 1	< 1	< 1	< 1	< 1	< 1	< 1	< 1	< 1
o-xylene	N	µg/m3	1	< 1	< 1	< 1	< 1	< 1	< 1	< 1	< 1	< 1
cis-1,2-dichloroethene	N	µg/m3	1	< 1	< 1	< 1	< 1	< 1	< 1	< 1	< 1	< 1
1,1-Dichloroethane	N	µg/m3	1	< 1	< 1	< 1	< 1	< 1	< 1	< 1	< 1	< 1
Chloroform	N	µg/m3	1	< 1	< 1	< 1	< 1	< 1	< 1	< 1	< 1	< 1
Tetrachloromethane	N	µg/m3	1	< 1	< 1	< 1	< 1	< 1	< 1	< 1	< 1	< 1
1,1,1-Trichloroethane	N	µg/m3	1	< 1	< 1	< 1	< 1	< 1	< 1	< 1	< 1	< 1
Trichloroethylene	N	µg/m3	1	< 1	< 1	< 1	< 1	< 1	< 1	< 1	< 1	< 1
Tetrachloroethylene	N	µg/m3	1	< 1	< 1	< 1	< 1	< 1	< 1	< 1	< 1	< 1
1,1,1,2-Tetrachloroethane	N	µg/m3	1	< 1	< 1	< 1	< 1	< 1	< 1	< 1	< 1	< 1
1,1,2,2-Tetrachloroethane	N	µg/m3	1	< 1	< 1	< 1	< 1	< 1	< 1	< 1	< 1	< 1
Chlorobenzene	N	µg/m3	1	< 1	< 1	< 1	< 1	< 1	< 1	< 1	< 1	< 1
Bromobenzene	N	µg/m3	1	< 1	< 1	< 1	< 1	< 1	< 1	< 1	< 1	< 1
Bromodichloromethane	N	µg/m3	1	< 1	< 1	< 1	< 1	< 1	< 1	< 1	< 1	< 1
Methylethylbenzene	N	µg/m3	1	< 1	< 1	< 1	< 1	< 1	< 1	< 1	< 1	< 1
1,1-Dichloro-1-propene	N	µg/m3	1	< 1	< 1	< 1	< 1	< 1	< 1	< 1	< 1	< 1
Trans - 1-2 -dichloroethylene	N	µg/m3	1	< 1	< 1	< 1	< 1	< 1	< 1	< 1	< 1	< 1
2,2-Dichloropropane	N	µg/m3	1	< 1	< 1	< 1	< 1	< 1	< 1	< 1	< 1	< 1
Bromochloromethane	N	µg/m3	1	< 1	< 1	< 1	< 1	< 1	< 1	< 1	< 1	< 1
1,2-Dichloroethane	N	µg/m3	1	< 1	< 1	< 1	< 1	< 1	< 1	< 1	< 1	< 1
Dibromomethane	N	µg/m3	1	< 1	< 1	< 1	< 1	< 1	< 1	< 1	< 1	< 1
1,2-Dichloropropane	N	µg/m3	1	< 1	< 1	< 1	< 1	< 1	< 1	< 1	< 1	< 1
cis-1,3-Dichloro-1-propene	N	µg/m3	1	< 1	< 1	< 1	< 1	< 1	< 1	< 1	< 1	< 1
trans-1,3-Dichloro-1-propene	N	µg/m3	1	< 1	< 1	< 1	< 1	< 1	< 1	< 1	< 1	< 1
1,1,2-Trichloroethane	N	µg/m3	1	< 1	< 1	< 1	< 1	< 1	< 1	< 1	< 1	< 1
Dibromochloromethane	N	µg/m3	1	< 1	< 1	< 1	< 1	< 1	< 1	< 1	< 1	< 1
1,3-Dichloropropane	N	µg/m3	1	< 1	< 1	< 1	< 1	< 1	< 1	< 1	< 1	< 1
Dibromoethane	N	µg/m3	1	< 1	< 1	< 1	< 1	< 1	< 1	< 1	< 1	< 1
Styrene	N	µg/m3	1	< 1	< 1	< 1	< 1	< 1	< 1	< 1	< 1	< 1
Propylbenzene	N	µg/m3	1	< 1	< 1	< 1	< 1	< 1	< 1	< 1	< 1	< 1
2-Chlorotoluene	N	µg/m3	1	< 1	< 1	< 1	< 1	< 1	< 1	< 1	< 1	< 1
1,2,4-Trimethylbenzene	N	µg/m3	1	< 1	< 1	< 1	< 1	< 1	< 1	< 1	< 1	< 1
4-Chlorotoluene	N	µg/m3	1	< 1	< 1	< 1	< 1	< 1	< 1	< 1	< 1	< 1
t-butylbenzene	N	µg/m3	1	< 1	< 1	< 1	< 1	< 1	< 1	< 1	< 1	< 1
1,3,5-Trimethylbenzene	N	µg/m3	1	< 1	< 1	< 1	< 1	< 1	< 1	< 1	< 1	< 1
1-methylpropylbenzene	N	µg/m3	1	< 1	< 1	< 1	< 1	< 1	< 1	< 1	< 1	< 1
p-cymene	N	µg/m3	1	< 1	< 1	< 1	< 1	< 1	< 1	< 1	< 1	< 1
1,3-Dichlorobenzene	N	µg/m3	1	< 1	< 1	< 1	< 1	< 1	< 1	< 1	< 1	< 1
Butylbenzene	N	µg/m3	1	< 1	< 1	< 1	< 1	< 1	< 1	< 1	< 1	< 1
1,2-Dibromo-3-chloropropane	N	µg/m3	1	< 1	< 1	< 1	< 1	< 1	< 1	< 1	< 1	< 1
Hexachlorobutadiene	N	µg/m3	1	< 1	< 1	< 1	< 1	< 1	< 1	< 1	< 1	< 1
1-2-3 - Trichlorobenzene	N	µg/m3	1	< 1	< 1	< 1	< 1	< 1	< 1	< 1	< 1	< 1
Naphthalene	N	µg/m3	1	< 1	< 1	< 1	< 1	< 1	< 1	< 1	< 1	< 1
1-2-4 - Trichlorobenzene	N	µg/m3	1	< 1	< 1	< 1	< 1	< 1	< 1	< 1	< 1	< 1
1,4-Dichlorobenzene	N	µg/m3	1	< 1	< 1	< 1	< 1	< 1	< 1	< 1	< 1	< 1
1,2-Dichlorobenzene	N	µg/m3	1	< 1	< 1	< 1	< 1	< 1	< 1	< 1	< 1	< 1
Bromoform	N	µg/m3	1	< 1	< 1	< 1	< 1	< 1	< 1	< 1	< 1	< 1



Results Summary

Report No.: 19-24066, issue number 1

				ELAB Reference	179350	179351	179352	179353	179354	179355	179356	179357
				Customer Reference	RTV1	RTV2	RTV3	RTV4	RTV5	RTV6	RTV7	RTV8
				Sample ID								
				Sample Type	GAS	GAS	GAS	GAS	GAS	GAS	GAS	GAS
				Sample Location	S874E	S872E	S879E	S878E	S875E	S877E	S873E	S869E
				Sample Depth (m)								
				Sampling Date	19/07/2019	19/07/2019	19/07/2019	19/07/2019	19/07/2019	19/07/2019	19/07/2019	19/07/2019
Determinand	Codes	Units	LOD									
SVOC												
Phenol	N	µg/m3	1	< 1	< 1	< 1	< 1	< 1	< 1	< 1	< 1	< 1
Aniline	N	µg/m3	1	< 1	< 1	< 1	< 1	< 1	< 1	< 1	< 1	< 1
Bis(2-chloroethyl)ether	N	µg/m3	1	< 1	< 1	< 1	< 1	< 1	< 1	< 1	< 1	< 1
2-Chlorophenol	N	µg/m3	1	< 1	< 1	< 1	< 1	< 1	< 1	< 1	< 1	< 1
1,3-Dichlorobenzene	N	µg/m3	1	< 1	< 1	< 1	< 1	< 1	< 1	< 1	< 1	< 1
1,4-Dichlorobenzene	N	µg/m3	1	< 1	< 1	< 1	< 1	< 1	< 1	< 1	< 1	< 1
Benzyl Alcohol	N	µg/m3	1	< 1	< 1	< 1	< 1	< 1	< 1	< 1	< 1	< 1
1,2-Dichlorobenzene	N	µg/m3	1	< 1	< 1	< 1	< 1	< 1	< 1	< 1	< 1	< 1
2-Methylphenol	N	µg/m3	1	< 1	< 1	< 1	< 1	< 1	< 1	< 1	< 1	< 1
Bis(2-chloroisopropyl)ether	N	µg/m3	1	< 1	< 1	< 1	< 1	< 1	< 1	< 1	< 1	< 1
3 and 4-methylphenol	N	µg/m3	1	< 1	< 1	< 1	< 1	< 1	< 1	< 1	< 1	< 1
N-Nitrosodi-n-propylamine	N	µg/m3	1	< 1	< 1	< 1	< 1	< 1	< 1	< 1	< 1	< 1
Hexachloroethane	N	µg/m3	1	< 1	< 1	< 1	< 1	< 1	< 1	< 1	< 1	< 1
Nitrobenzene	N	µg/m3	1	< 1	< 1	< 1	< 1	< 1	< 1	< 1	< 1	< 1
Isophorone	N	µg/m3	1	< 1	< 1	< 1	< 1	< 1	< 1	< 1	< 1	< 1
2-Nitrophenol	N	µg/m3	1	< 1	< 1	< 1	< 1	< 1	< 1	< 1	< 1	< 1
2,4-Dimethylphenol	N	µg/m3	1	< 1	< 1	< 1	< 1	< 1	< 1	< 1	< 1	< 1
Bis(2-chloroethoxy)methane	N	µg/m3	1	< 1	< 1	< 1	< 1	< 1	< 1	< 1	< 1	< 1
2,4-Dichlorophenol	N	µg/m3	1	< 1	< 1	< 1	< 1	< 1	< 1	< 1	< 1	< 1
1,3,5-Trichlorobenzene	N	µg/m3	1	< 1	< 1	< 1	< 1	< 1	< 1	< 1	< 1	< 1
Naphthalene	N	µg/m3	1	< 1	< 1	74	< 1	< 1	< 1	< 1	< 1	< 1
3-Chloroaniline	N	µg/m3	1	< 1	< 1	< 1	< 1	< 1	< 1	< 1	< 1	< 1
Hexachloro-1,3-butadiene	N	µg/m3	1	< 1	< 1	< 1	< 1	< 1	< 1	< 1	< 1	< 1
4-Chloro-3-methylphenol	N	µg/m3	1	< 1	< 1	< 1	< 1	< 1	< 1	< 1	< 1	< 1
2-Methylnaphthalene	N	µg/m3	1	< 1	< 1	4	< 1	< 1	< 1	< 1	< 1	< 1
1-Methylnaphthalene	N	µg/m3	1	< 1	< 1	3	< 1	< 1	< 1	< 1	< 1	< 1
Hexachlorocyclopentadiene	N	µg/m3	1	< 1	< 1	< 1	< 1	< 1	< 1	< 1	< 1	< 1
2,4,6-Trichlorophenol	N	µg/m3	1	< 1	< 1	< 1	< 1	< 1	< 1	< 1	< 1	< 1
2,4,5-Trichlorophenol	N	µg/m3	1	< 1	< 1	< 1	< 1	< 1	< 1	< 1	< 1	< 1
1-Chloronaphthalene	N	µg/m3	1	< 1	< 1	< 1	< 1	< 1	< 1	< 1	< 1	< 1
2-Nitroaniline	N	µg/m3	1	< 1	< 1	< 1	< 1	< 1	< 1	< 1	< 1	< 1
1,4-Dinitrobenzene	N	µg/m3	1	< 1	< 1	< 1	< 1	< 1	< 1	< 1	< 1	< 1
Dimethyl phthalate	N	µg/m3	1	< 1	< 1	< 1	< 1	< 1	< 1	< 1	< 1	< 1
1-3-dinitrobenzene	N	µg/m3	1	< 1	< 1	< 1	< 1	< 1	< 1	< 1	< 1	< 1
2-6-dinitrotoluene	N	µg/m3	1	< 1	< 1	< 1	< 1	< 1	< 1	< 1	< 1	< 1
Acenaphthylene	N	µg/m3	1	< 1	< 1	< 1	< 1	< 1	< 1	< 1	< 1	< 1
1,2-Dinitrobenzene	N	µg/m3	1	< 1	< 1	< 1	< 1	< 1	< 1	< 1	< 1	< 1
3-Nitroaniline	N	µg/m3	1	< 1	< 1	< 1	< 1	< 1	< 1	< 1	< 1	< 1
Acenaphthene	N	µg/m3	1	< 1	< 1	< 1	< 1	< 1	< 1	< 1	< 1	< 1
4-nitrophenol	N	µg/m3	1	< 1	< 1	< 1	< 1	< 1	< 1	< 1	< 1	< 1
Dibenzofuran	N	µg/m3	1	< 1	< 1	< 1	< 1	< 1	< 1	< 1	< 1	< 1
2,3,5,6-Tetrachlorophenol	N	µg/m3	1	< 1	< 1	< 1	< 1	< 1	< 1	< 1	< 1	< 1
2,3,4,6-Tetrachlorophenol	N	µg/m3	1	< 1	< 1	< 1	< 1	< 1	< 1	< 1	< 1	< 1
Diethyl phthalate	N	µg/m3	1	< 1	< 1	< 1	< 1	< 1	< 1	< 1	< 1	< 1
1-chloro-4-phenoxybenzene	N	µg/m3	1	< 1	< 1	< 1	< 1	< 1	< 1	< 1	< 1	< 1
Fluorene	N	µg/m3	1	< 1	< 1	< 1	< 1	< 1	< 1	< 1	< 1	< 1
4-Nitroaniline	N	µg/m3	1	< 1	< 1	< 1	< 1	< 1	< 1	< 1	< 1	< 1
Dinitro-o-cresol	N	µg/m3	1	< 1	< 1	< 1	< 1	< 1	< 1	< 1	< 1	< 1
Diphenylamine	N	µg/m3	1	< 1	< 1	< 1	< 1	< 1	< 1	< 1	< 1	< 1
Azobenzene	N	µg/m3	1	< 1	< 1	< 1	< 1	< 1	< 1	< 1	< 1	< 1
1-bromo-4-phenoxybenzene	N	µg/m3	1	< 1	< 1	< 1	< 1	< 1	< 1	< 1	< 1	< 1
Hexachlorobenzene	N	µg/m3	1	< 1	< 1	< 1	< 1	< 1	< 1	< 1	< 1	< 1
Pentachlorophenol	N	µg/m3	1	< 1	< 1	< 1	< 1	< 1	< 1	< 1	< 1	< 1
Phenanthrene	N	µg/m3	1	< 1	< 1	< 1	< 1	< 1	< 1	< 1	< 1	< 1
Anthracene	N	µg/m3	1	< 1	< 1	< 1	< 1	< 1	< 1	< 1	< 1	< 1
Carbazole	N	µg/m3	1	< 1	< 1	< 1	< 1	< 1	< 1	< 1	< 1	< 1
Dibutyl phthalate	N	µg/m3	1	< 1	< 1	< 1	< 1	< 1	< 1	< 1	< 1	< 1
Fluoranthene	N	µg/m3	1	< 1	< 1	< 1	< 1	< 1	< 1	< 1	< 1	< 1
Pyrene	N	µg/m3	1	< 1	< 1	< 1	< 1	< 1	< 1	< 1	< 1	< 1
Butyl benzyl phthalate	N	µg/m3	1	< 1	< 1	< 1	< 1	< 1	< 1	< 1	< 1	< 1
Bis-2-ethylhexyladipate	N	µg/m3	1	< 1	< 1	< 1	< 1	< 1	< 1	< 1	< 1	< 1
Diisooctyl phthalate	N	µg/m3	1	< 1	< 1	< 1	< 1	< 1	< 1	< 1	< 1	< 1
Benzo(a)anthracene	N	µg/m3	1	< 1	< 1	< 1	< 1	< 1	< 1	< 1	< 1	< 1
Chrysene	N	µg/m3	1	< 1	< 1	< 1	< 1	< 1	< 1	< 1	< 1	< 1
Bis(2-ethylhexyl)phthalate	N	µg/m3	1	< 1	< 1	< 1	< 1	< 1	< 1	< 1	< 1	< 1
Benzo(b)fluoranthene	N	µg/m3	1	< 1	< 1	< 1	< 1	< 1	< 1	< 1	< 1	< 1
Benzo(k)fluoranthene	N	µg/m3	1	< 1	< 1	< 1	< 1	< 1	< 1	< 1	< 1	< 1
Benzo(a)pyrene	N	µg/m3	1	< 1	< 1	< 1	< 1	< 1	< 1	< 1	< 1	< 1
Indeno(1,2,3-CD)pyrene	N	µg/m3	1	< 1	< 1	< 1	< 1	< 1	< 1	< 1	< 1	< 1
Dibenz(ah)anthracene	N	µg/m3	1	< 1	< 1	< 1	< 1	< 1	< 1	< 1	< 1	< 1
Benzo(ghi)perylene	N	µg/m3	1	< 1	< 1	< 1	< 1	< 1	< 1	< 1	< 1	< 1



Method Summary

Report No.: 19-24066, issue number 1

Parameter	Codes	Analysis Undertaken On	Date Tested	Method Number	Technique
SVOC - Tubes	N		22/07/2019	167	GC-MS
VOC - Tubes	N		22/07/2019	181	GC-MS

Tests marked N are not UKAS accredited



Report Information

Report No.: 19-24066, issue number 1

Key

U	hold UKAS accreditation
M	hold MCERTS and UKAS accreditation
N	do not currently hold UKAS accreditation
^	MCERTS accreditation not applicable for sample matrix
*	UKAS accreditation not applicable for sample matrix
S	Subcontracted to approved laboratory UKAS Accredited for the test
SM	Subcontracted to approved laboratory MCERTS/UKAS Accredited for the test
NS	Subcontracted to approved laboratory. UKAS accreditation is not applicable.
I/S	Insufficient Sample
U/S	Unsuitable sample
n/t	Not tested
<	means "less than"
>	means "greater than"

Soil sample results are expressed on an air dried basis (dried at < 30°C), and are uncorrected for inert material removed.

ELAB are unable to provide an interpretation or opinion on the content of this report.

The results relate only to the sample received.

PCB congener results may include any coeluting PCBs

Uncertainty of measurement for the determinands tested are available upon request

Unless otherwise stated, sample information has been provided by the client

Deviation Codes

- a No date of sampling supplied
- b No time of sampling supplied (Waters Only)
- c Sample not received in appropriate containers
- d Sample not received in cooled condition
- e The container has been incorrectly filled
- f Sample age exceeds stability time (sampling to receipt)
- g Sample age exceeds stability time (sampling to analysis)

Where a sample has a deviation code, the applicable test result may be invalid.

Sample Retention and Disposal

All soil samples will be retained for a period of one month

All water samples will be retained for 7 days following the date of the test report

Charges may apply to extended sample storage



Unit A2
Windmill Road
Ponswood Industrial Estate
St Leonards on Sea
East Sussex
TN38 9BY
Telephone (01424) 718618
Facsimile (01424) 729911

THE ENVIRONMENTAL LABORATORY LTD

Adrian Phillips
RSA Geotechnics Ltd
1 Maitland Road
Needham Market
Suffolk, IP6 8NZ

Reporting Date: 24 July 2019

ANALYTICAL REPORT No. 57091

Samples Received By: Laboratory Courier
Sample Receipt Date: 22/07/19
Your Job No: 14862CO
Your Order No: 14862CO
Site Location: Wallis Road Air Monitoring 11 July to 19 July 2019
No Samples Received: 3
Date of Sampling: 19/07/19

This report was written by: Stuart Ballard

Authorised By;

Mike Varley
Technical Manager (BSc, CChem
CSci, FRSC)

Any comments, opinions or interpretations expressed herein are outside the scope of UKAS accreditation (Accreditation Number 2683)

THE ENVIRONMENTAL LABORATORY LTD

Unit A2, Windmill Road, Ponswood Industrial Estate, St Leonards On Sea, East Sussex, TN38 9BY

Tel: 01424 718618 Fax: 01424 729911

ANALYTICAL REPORT No. 57091

Location: Wallis Road Air Monitoring 11 July to 19 July 2019



Your Job No: 14862CO
Your Order No: 14862CO
Reporting Date: 24/07/19

F.A.O. Adrian Phillips
RSA Geotechnics Ltd
1 Maitland Road
Needham Market
Suffolk, IP6 8NZ

TPH CWG - Tubes

Characteristic	TUBE	TUBE	TUBE
Date Sampled	19/07/19	19/07/19	19/07/19
TP/BH	S876E - RT T1	S871E - RT T2	S880E - RT T3
Our ref	38451	38452	38453
<u>Aromatic</u>			
>EC ₅ -EC ₇	(µg/m ³)	<100	<100
>EC ₇ -EC ₈	(µg/m ³)	<100	<100
>EC ₈ -EC ₁₀	(µg/m ³)	<100	<100
>EC ₁₀ -EC ₁₂	(µg/m ³)	<100	<100
>EC ₁₂ -EC ₁₆	(µg/m ³)	<100	<100
>EC ₁₆ -EC ₂₁	(µg/m ³)	<100	<100
>EC ₂₁ -EC ₃₅	(µg/m ³)	<100	<100
>EC ₃₅ -EC ₄₀	(µg/m ³)	<100	<100
<u>Aliphatic</u>			
>EC ₅ -EC ₆	(µg/m ³)	<100	<100
>EC ₆ -EC ₈	(µg/m ³)	<100	<100
>EC ₈ -EC ₁₀	(µg/m ³)	<100	<100
>EC ₁₀ -EC ₁₂	(µg/m ³)	<100	<100
>EC ₁₂ -EC ₁₆	(µg/m ³)	<100	<100
>EC ₁₆ -EC ₂₁	(µg/m ³)	<100	<100
>EC ₂₁ -EC ₃₅	(µg/m ³)	<100	<100
>EC ₃₅ -EC ₄₀	(µg/m ³)	<100	<100
TPH (C ₅ - C ₄₀)	(µg/m ³)	<100	<100

All results expressed on dry weight basis

** - MCERTS accredited test

Stuart Ballard



Unit A2
Windmill Road
Ponswood Industrial Estate
St Leonards on Sea
East Sussex
TN38 9BY
Telephone (01424) 718618
Facsimile (01424) 729911

THE ENVIRONMENTAL LABORATORY LTD

SAMPLE RECEIPT AND TEST DATES

Our Analytical Report Number 57091
Your Ref No: 14862CO
Sample Receipt Date: 22/07/19
Reporting Date: 24/07/19

Registered: 22/07/19
Prepared: 22/07/19
Analysis complete: 24/07/19

TEST METHOD SUMMARY

PARAMETER	Analysis Undertaken on	Date Tested	Method Number	Technique
Carbon Banding (TPH CWG)	As submitted sample	23/07/19	214	Gas chromatography

Note:- Documented In-house procedure based on HSG 248 2005

** - MCERTS Accredited test

Determinands not marked with * or ** are not accredited

MCERTS accreditation covers samples which are predominantly sand, clay, loam or combinations of these three soil types

Any comments, opinions, or interpretations expressed herein are outside the scope of UKAS accreditation (Accreditation Number 2683)
